

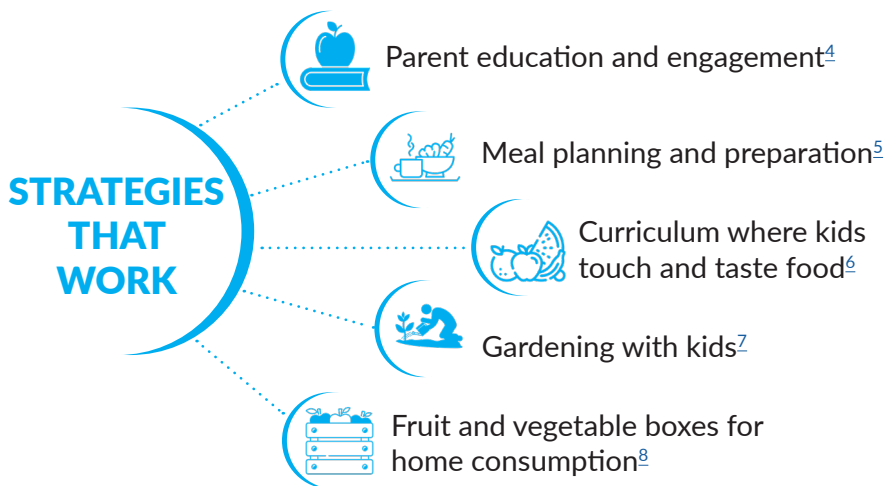
Georgia's Early Care and Education (ECE) programs serve more than **330,000 children**, many of whom may consume **1-3 meals** and **2 snacks** a day onsite.<sup>1, 2</sup>

## Why Farm to Early Care and Education?

Research shows Farm to School initiatives improve children's health and nutrition.<sup>3</sup> Most of these programs start in K-12 schools, but children can be reached earlier with Farm to Early Care and Education (FTECE).

## Top Reasons Providers Choose to Participate in FTECE

1. Teach children where food comes from and how it is grown
2. Improve child health
3. Provide children with experiential learning



## What FTECE Supports

- Fruit and vegetable consumption, some of which may increase vitamin A, C, and E intake<sup>9</sup>
- Healthy food consumption at home<sup>10</sup>
- Willingness to try new foods<sup>11</sup>
- Development of motor skills<sup>12</sup>
- Life skills, social skills, and self-esteem<sup>13</sup>
- Increased physical activity<sup>14</sup>
- Reduced diet-related diseases among children<sup>15</sup>
- Reduced food waste

## FTECE and Agriculture



FTECE benefits children, as well as supports Georgia farmers. FTECE encourages childcare providers to:



Purchase and serve fresh, nutritious, local foods for their children



Host on-site farmers markets for parents and staff



Develop partnerships with local farms for experiential learning.

## Georgia Supports Farm to Academia

### Georgia's Farm to Early Care and Education (FTECE) Coalition<sup>16</sup>

Supports children **ages 0 to 5**

During the 2021-2022 school year:

**55+** FTECE Coalition members

**190** FTECE Coalition professional development or activities (e.g., presentations, trainings, technical assistance, etc.)

FTECE Coalition provided **340** ECE sites with support

### Farm-to-School (FTS) Alliance<sup>17</sup>

Serves **K-12 students** in increasing knowledge, experiences, and exposures with local foods

During the 2021-2022 school year:

**30+** FTS Alliance members

**140** FTS Alliance professional development or activities (e.g., presentations, trainings, technical assistance, etc.)

FTS Alliance provided approximately **50** grants, **100** awards, and **20** incentives to support local, regional, and statewide efforts

### Policy Recommendations

- ✓ Allocate funding to reimburse ECE programs when meals incorporate local foods.
- ✓ Develop and fund a pilot for ECE providers to purchase larger quantities of food from local farmers.



## References for Farm to Early Care and Education

Suggested citation: Voices for Georgia's Children. (2023). Fact Sheet: Farm to Early Care and Education. Voices for Georgia's Children. <https://adobe.ly/47yGbGz>.

- 1 Georgia State University's Andrew Young School of Policy Studies and the University of Georgia's Carl Vinson Institute of Government. "Economic Impact of the Early Care and Education Industry in Georgia" Accessed May 25, 2022. <http://www.decal.ga.gov/documents/attachments/EconImpactReport.pdf>.
- 2 Child Care Aware. Georgia 2020 State Fact Sheet. Retrieved June 12, 2022. [https://www.childcareaware.org/our-issues/research/ccdc/state/ga/?doing\\_wp\\_cron=1686510733.7528870105743408203125](https://www.childcareaware.org/our-issues/research/ccdc/state/ga/?doing_wp_cron=1686510733.7528870105743408203125).
- 3 National Farm to School Network. "The Benefits of Farm to School." Retrieved June 11, 2023. <http://www.farmtoschool.org/Resources/BenefitsFactSheet.pdf>.
- 4 Ibid.
- 5 Ibid.
- 6 National Farm to School Network. "Results from the 2015 National Survey of Early Care and Education Providers: Local Procurement, Gardening, and Food and Farm Education." Retrieved June 11, 2023. [https://assets.website-files.com/5c469df2395cd53c3d913b2d/6110460d61ddcbc94002c752\\_ECESurvey\\_Report-min.pdf](https://assets.website-files.com/5c469df2395cd53c3d913b2d/6110460d61ddcbc94002c752_ECESurvey_Report-min.pdf).
- 7 Ibid.
- 8 National Farm to School Network. "The Benefits of Farm to School." Retrieved June 11, 2023. <http://www.farmtoschool.org/Resources/BenefitsFactSheet.pdf>.
- 9 Ibid.
- 10 Ibid.
- 11 Ibid.
- 12 Ibid.
- 13 Ibid.
- 14 National Farm to School Network. "Results from the 2015 National Survey of Early Care and Education Providers: Local Procurement, Gardening, and Food and Farm Education." Retrieved June 11, 2023. [http://www.farmtoschool.org/Resources/ECESurvey\\_Report.pdf](http://www.farmtoschool.org/Resources/ECESurvey_Report.pdf).
- 15 National Farm to School Network. "The Benefits of Farm to School." Retrieved June 11, 2023. <http://www.farmtoschool.org/Resources/BenefitsFactSheet.pdf>.
- 16 Georgia Organics. Georgia Farm to School Alliance and Farm to Early Care and Education Coalition: Annual Impact Report School Year 2021 - 2022. Retrieved June 11, 2023. <https://static1.squarespace.com/static/5e56b958b2d7590aa7c9945f/t/6421f2e7e15930690ab2c69f/1679946484315/Alliance+and+Coalition+Impact+Report.pdf>.
- 17 Ibid.